

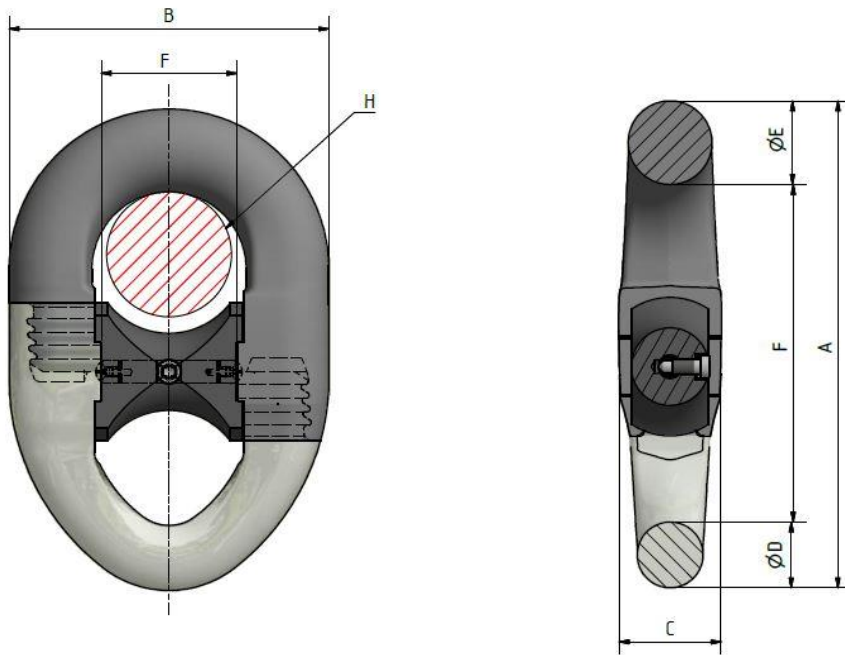
Kenter Type Connection



NDur Anchor Shackle

Offshore accessory to be used for Temporary and Mobile Mooring as defined in DNVGL-OS-E301

Position Mooring



| chain dia. | A | B | C | D | E | F | G | H | R4 PL kN | R4 MBL kN | R4S PL kN | R4S MBL kN | R5 PL kN | R5 MBL kN |
|------------|------|-----|-----|-----|-----|-----|-----|-----|----------|-----------|-----------|------------|----------|-----------|
| 76 | 619 | 412 | 130 | 83 | 106 | 175 | 430 | 160 | 4754 | 6030 | 5282 | 6691 | 5524 | 7043 |
| 84 | 685 | 455 | 141 | 90 | 118 | 193 | 477 | 180 | 5682 | 7208 | 6313 | 7997 | 6602 | 8418 |
| 89 | 738 | 513 | 162 | 98 | 130 | 213 | 510 | 200 | 6439 | 8167 | 7154 | 9062 | 7482 | 9539 |
| 105 | 855 | 569 | 180 | 116 | 147 | 241 | 592 | 220 | 8478 | 10754 | 9420 | 11932 | 9851 | 12560 |
| 140 | 1140 | 754 | 239 | 150 | 190 | 322 | 800 | 300 | 13886 | 17615 | 15429 | 19544 | 16136 | 20572 |

Type approved by: DNVGL /ABS approval in progress

Application: Temporary and Mobile Mooring

Manufactured & Tested: in Germany by Feubo

Material: Forged Steel - Grade R4, R4S, R5

Features: Non-Standard Kenter Shackles to connect mooring chains directly to anchors